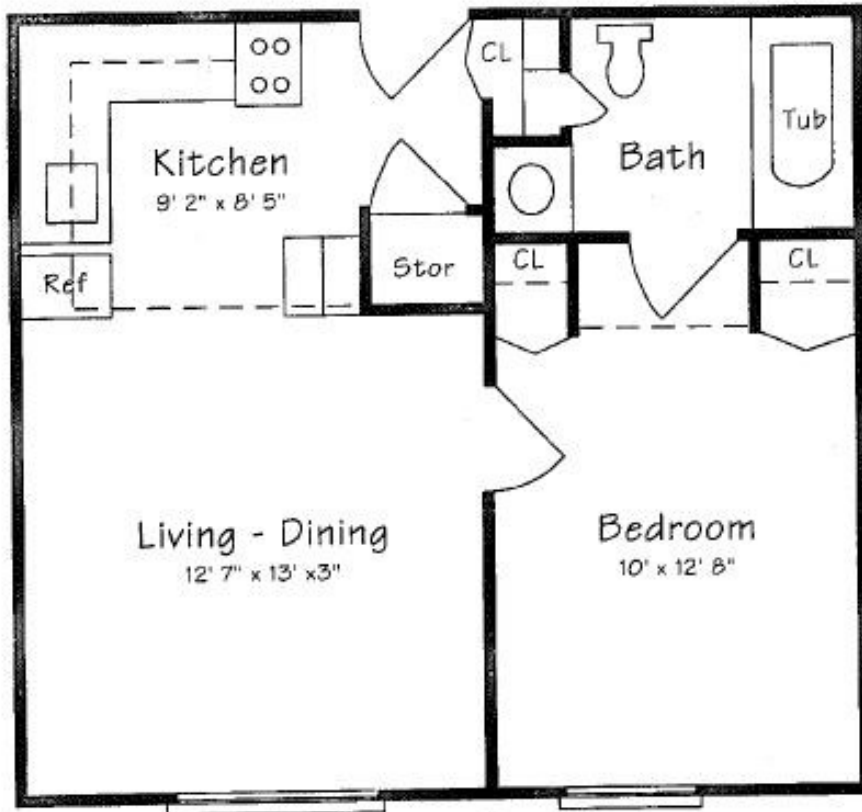
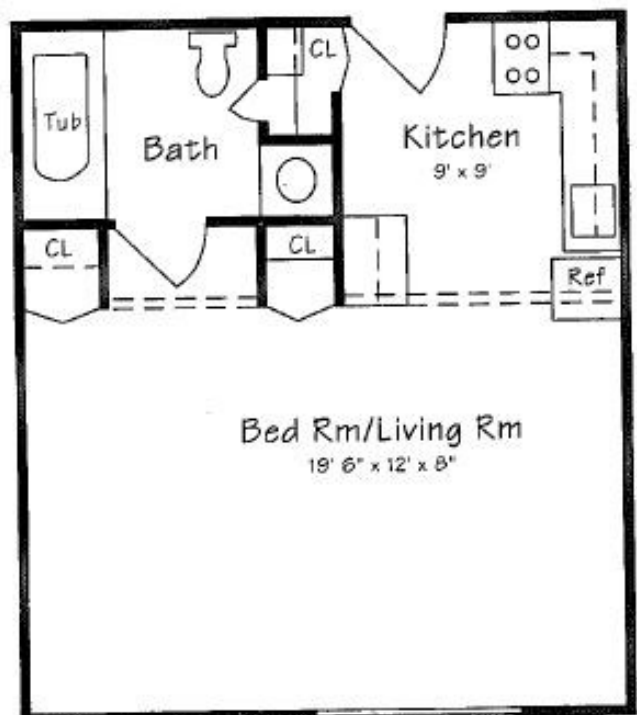


# Green Hills Inn Floor Plans



One Bedroom



Studio Suite



**Green Hills Community™**

*Enriching All Seasons of Life*

# TV CHANNELS

- |    |                     |    |                         |
|----|---------------------|----|-------------------------|
| 2  | CHANNEL GUIDE       | 33 | OXYGEN                  |
| 3  | CBS - WHIO          | 34 | TLC                     |
| 4  | NBC - WDTN          | 35 | PARAMOUNT               |
| 5  | CW - WBDT           | 36 | SYFY                    |
| 6  | ABC - WKEF          | 37 | FOOD NETWORK            |
| 7  | FOX - WRGT          | 38 | TCM                     |
| 8  | PBS - WPTD          | 39 | LIFETIME                |
| 9  | STADIUM TV - WKEF 2 | 40 | HALLMARK CHANNEL        |
| 10 | WEATHER CHANNEL     | 41 | HGTV                    |
| 11 | WGN AMERICA         | 42 | LIFETIME MOVIES         |
| 12 | IND - WTLW          | 43 | GAME SHOW NETWORK       |
| 13 | ESPN                | 44 | TV LAND                 |
| 14 | ESPN2               | 45 | FREEFORM                |
| 15 | BTN                 | 46 | TRAVEL CHANNEL          |
| 16 | FOX SPORTS OHIO     | 47 | TRUTV                   |
| 17 | FOX SPORTS 1        | 48 | COMEDY CENTRAL          |
| 18 | GOLF CHANNEL        | 49 | E!                      |
| 19 | NBC SPORTS          | 50 | DISNEY CHANNEL          |
| 20 | FOX NEWS CHANNEL    | 51 | NICKELODEON             |
| 21 | CNN                 | 52 | CARTOON NETWORK         |
| 22 | HLN                 | 53 | ANIMAL PLANET           |
| 23 | CNBC                | 54 | DISCOVERY               |
| 24 | MSNBC               | 55 | WHIO2 - METV            |
| 25 | HISTORY             | 56 | UPLIFT                  |
| 26 | TNT                 | 57 | NAT GEO                 |
| 27 | TBS                 | 58 | CMT                     |
| 28 | FX                  | 59 | WE TV                   |
| 29 | USA                 | 60 | INVESTIGATION DISCOVERY |
| 30 | A&E                 | 61 | NICK JR                 |
| 31 | AMC                 | 62 | FOX BUSINESS NETWORK    |
| 32 | BRAVO               |    |                         |